

# LeKise

## LED Billboard Flood Light - Lumios™

The LeKise Lumios™ offers end-user great advantages in energy reduction and minimize maintenance frequency and cost compared with traditional HID luminaire system. The energy consumption can be significantly reduced more than 50% without warm-up period. Lumios™ has slim body, strong structure. Thanks to the special designed optical lens which effectively directs the light to the target area and provide maximum uniformity and great light distribution. Adopted Nichia LED package and high performance LED driver, this ensures the highest system reliability and long life span more than 50,000hours which is equal to 12.5years<sup>1</sup> of service.



### Features

- ✓ Special optical lens designed for maximum uniformity and light distribution
- ✓ Adopted Nichia LED package and high performance LED driver
- ✓ Stable performance with LED life span more than 50,000 hours
- ✓ Industrial-grade, corrosion proof anti-static coating over steel bracket
- ✓ Rated IP65 suitable for outdoor applications
- ✓ Operating ambient conditions: -40°C to +55°C / 10 to 90%RH
- ✓ Safety and environmental standards recognition
- ✓ 5-year limited warranty

<sup>1</sup>Based on -11 hours burning rate per day or 4,000 hours per year

### Applications

- ✓ Billboard
- ✓ Advertising Signage
- ✓ Building Facade



SKU No.	Product Description	Input Voltage	System Power	Power Factor	Luminous Flux (lm)	CCT (K)	CRI (Ra)	LED Life Span @L70 <sup>2</sup> (hrs)	NW. (kg)
<b>Lumios™</b>									
2150010	AD-LMO120/UNI/IP65/AS01/750	AC100-240V	120W	≥0.90	11000 (Typ.)	4700-5300	≥70	>50,000	8.0
2150011	AD-LMO200/UNI/IP65/AS01/750	AC100-240V	200W	≥0.90	18000 (Typ.)	4700-5300	≥70	>50,000	11.5

<sup>2</sup>Based on IES LM-80-08 report from LED's manufacturer and IES TM-21-11 calculation. Contact LeKise's representative for more information.

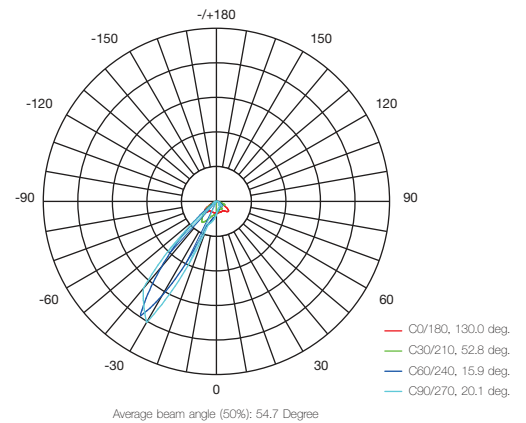
### Product Pictures



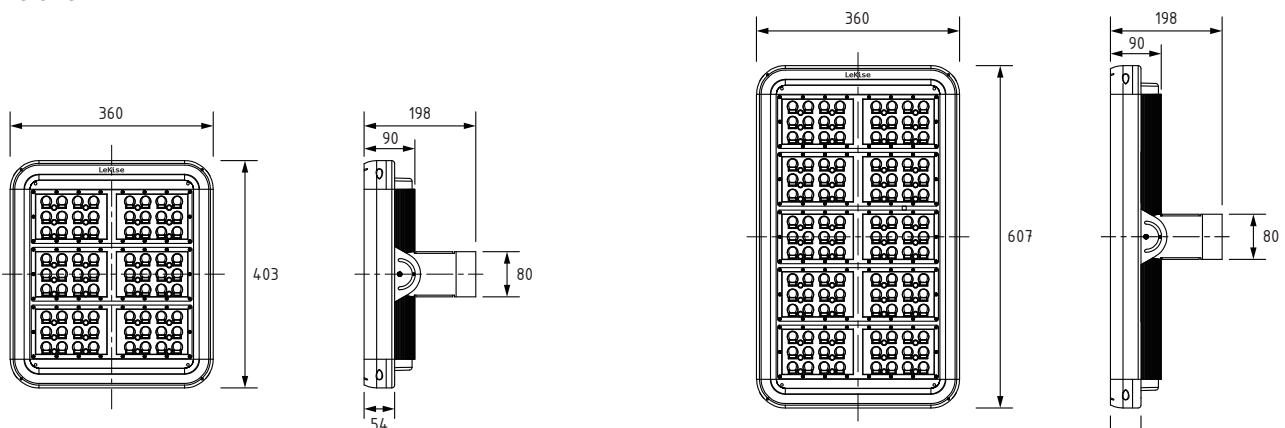
2150010 Lumios™ 120W

2150011 Lumios™ 200W

### Light Distribution Pattern: Asymmetrical - AS01



### Dimensions



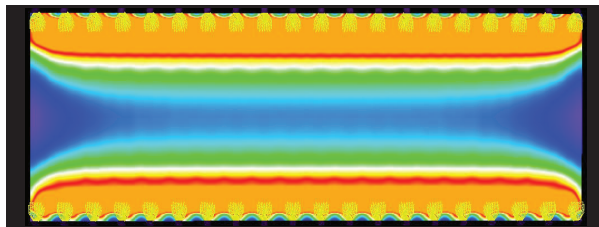
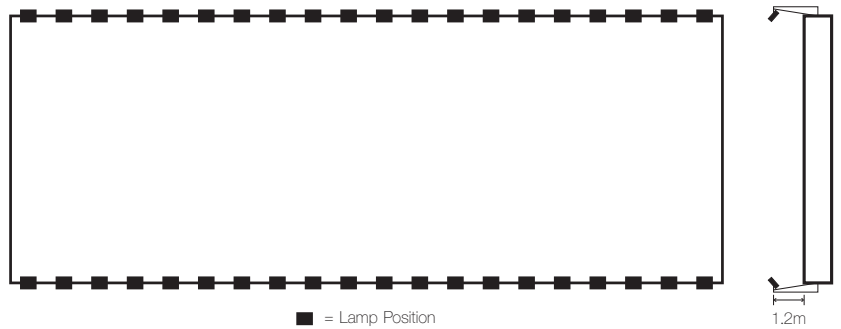
Note: Not to scale drawing. All dimensions are in mm.

## Installation Case Study

15m x40m Billboard

### Original System Configuration:-

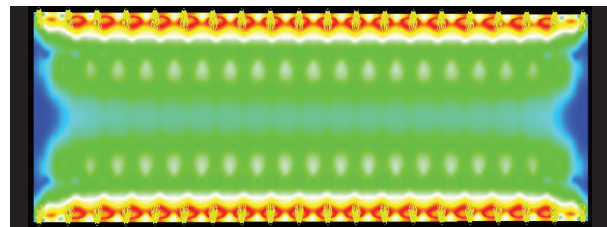
Lamp System: 250W HID lamp  
 System Power: 305W  
 Lamp Q'ty: 40pcs  
 (Top-20pcs/Bottom-20pcs)  
 Power Consumption: 12.2kW  
 Daily On-time: 10hours/day  
 Est. Annual kWh: 44,530kWh  
 Est. Annual Energy Cost: US\$ 4,007.7



Original System

Grid: 7 x 15 Points

$E_{av}$ [lx]	$E_{min}$ [lx]	$E_{max}$ [lx]	$u0$	$E_{min}/E_{max}$
818	184	3263	0.224	0.056



Lumios™ 1:1 Replacement

Grid: 7 x 15 Points

$E_{av}$ [lx]	$E_{min}$ [lx]	$E_{max}$ [lx]	$u0$	$E_{min}/E_{max}$
542	242	1105	0.446	0.219

## Performance and Energy Comparison

Characteristics	Original System	Lumios™ 120W
Light Source	250W MH	LED ✓
System Power	12.2kW	4.8kW ✓
Instant-On Capability	Need Warm Up	Yes ✓
Average Illuminance (lux)	818 ✓	542
Uniformity - $E_{av}/E_{max}$	0.224	0.446 ✓
- $E_{min}/E_{max}$	0.056	0.219 ✓
Dimming Control Capability	Limited	Fully Controllable ✓
Maintenance Frequency	Regular Maintenance	Very Low ✓
Hazardous Materials/Components	Yes	No ✓
Annual Energy Consumption <sup>1</sup>	44,530 kWh	17,520 kWh ✓
Annual Energy Cost <sup>2</sup>	US\$ 4,007.7	US\$ 1,576.8 ✓

\*\*\* Average illuminance >500lux is sufficient for most of outdoor billboard applications.

} High uniformity is obtained by special designed optical lens.

<sup>1</sup>Based on 40 luminaires with 10hours/day operating time and 365days/year.

<sup>2</sup>Energy Cost is estimated at US\$ 0.09/kWh rate.

## Packaging Information

Product Code	Product Description	Gross Weight (kg.)	Carton Dimensions WxLxH (mm)	CBM
2150010	AD-LMO120/UNI/IP65/AS01/750	9.0	465x420x190	0.0371
2150011	AD-LMO200/UNI/IP65/AS01/750	12.5	670x420x190	0.0534

### Safety Precautions

1. Risk of electric shock. Disconnect power before install or service this product.
2. Risk of electric shock or damage. Unless otherwise specified, ground must be ALWAYS connected to the ground wire of the lamp.
3. Risk of injury or damage. Unit may fall if product is not installed properly. Follow strictly installation instructions.
4. Risk of injury. Wear safely glasses and gloves during installation and servicing.
5. Study the detail in installation manual completely and carefully before install and use this product.
6. Do not attempt to repair this product yourself. Contact your nearest distributor for assistant in case of failure.

### Important Notes

1. LED technology significantly consumes less electrical power and current than traditional light source luminaire such as Halogen, Mercury Vapor, High Pressure Sodium, Metal Halide etc. The suitable fuse size and its rating should be used to provide maximum safety and to prevent permanent damage of the LED luminaire.
2. Each LED luminaire normally comes with a built-in surge protection device at a specific protection level. Depends on the installation area and/or location of the luminaire, the electrical distribution situation, severity and occurrence of surge voltage, an extra surge protection device (SPD) shall be considerably added to each individual luminaire to provide extra protection and reduce the risk of permanent damage of the LED luminaire.

© 2013 LeKise Lighting. All rights reserved.

LeKise® is the registered trademark of LeKise Lighting Co., Ltd.

Important Notice: The values given in this material for the technical parameters are only for statistic values that do not necessarily correspond to the actual parameters of an individual luminaire. This information may be updated and changed at any time without notice as new manufacturing process and technology is developed.

# LeKise

## Thailand (Head Office)

**LeKise Lighting Co., Ltd.**  
29/11 Moo 3, Rama 2 Road,  
T. Nadee, A. Muang,  
Samutsakhon 74000, Thailand  
T. +66 (0) 3441 9299  
F. +66 (0) 3441 9298

## Cambodia

**LeKise Lighting (Sales Office)**  
ANINA Building, 5/F  
No 240, St. 271,  
Sangkat Beoung Tumpun,  
Khan Meanchey, Phnom Penh City,  
Cambodia  
T. + (855) 23 55555 11

## China

**LeKise Trading (Shenzhen) Co., Ltd.**  
Level 13, Kerry Plaza Tower 3,  
No.1-1 Zhong Xin Si Road,  
Futian District, Shenzhen 518048,  
P.R. China  
T. +86 755 3304 6686-90

## Indonesia

**PT. LeKise International Indonesia**  
16th Floor, APL Office Tower,  
Podomoro City (Central Park)  
Jl. Let. Jend S. Parman Kav 28,  
Jakarta 11470, Indonesia  
T. +62 21 5289 7338  
F. +62 21 5289 7370

## Laos

**LeKise International (Lao) Co., Ltd.**  
Phontongsawad Village,  
Sibounheung Rd.,Chanthaburi District,  
Vientiane Capital, Lao P.D.R.  
T. +856 21 418123

## Malaysia/Singapore/Brunei

**LeKise Lighting Co., Ltd.**  
Level 30, The Gardens North Tower  
Mid Valley City, Lingkaran Syed Putra  
59200, Kuala Lumpur, Malaysia  
T. +603 2035 9220-1  
F. +603 2035 9797

## Myanmar

**LeKise Lighting (Sales Office)**  
No. 129, 36th Street,  
Kyauktada Township, Yangon,  
Myanmar  
T. +95 (1) 387 940

## Philippines/Papua New Guinea

**LeKise International Philippines, Inc.**  
LKG Tower  
37th Floor, 6801 Ayala Avenue,  
Makati City 1226, Philippines  
T. +63 (2) 859 2829  
F. +63 (2) 859 2882

## Vietnam

**LeKise International Vietnam Co.,Ltd.**  
Centec Tower, 4/F,  
72-74 Nguyen Thi Minh Khai Street,  
District 3, Ho Chi Minh City, Vietnam  
T. +84 8 6299 9422